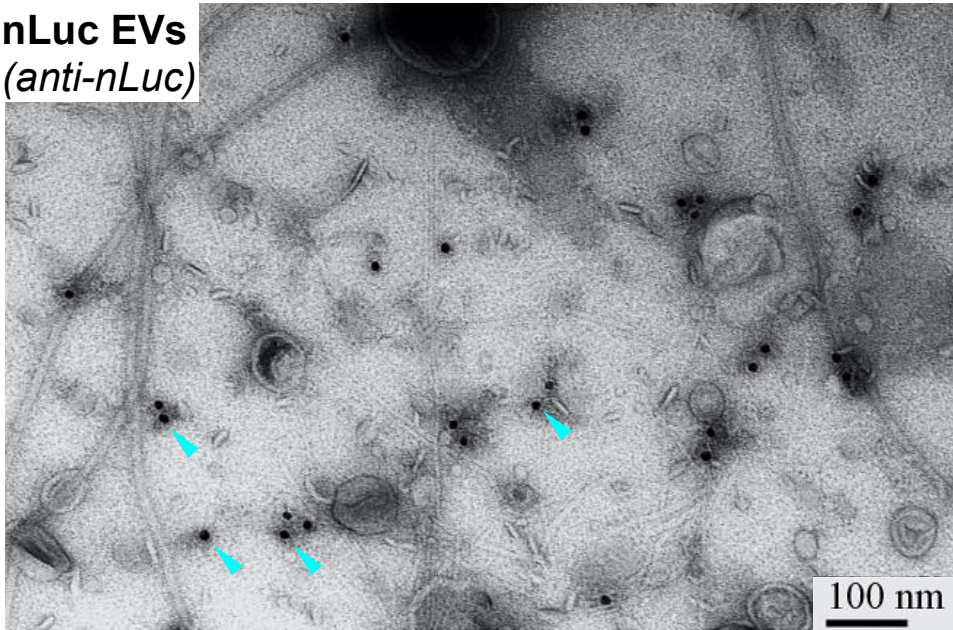
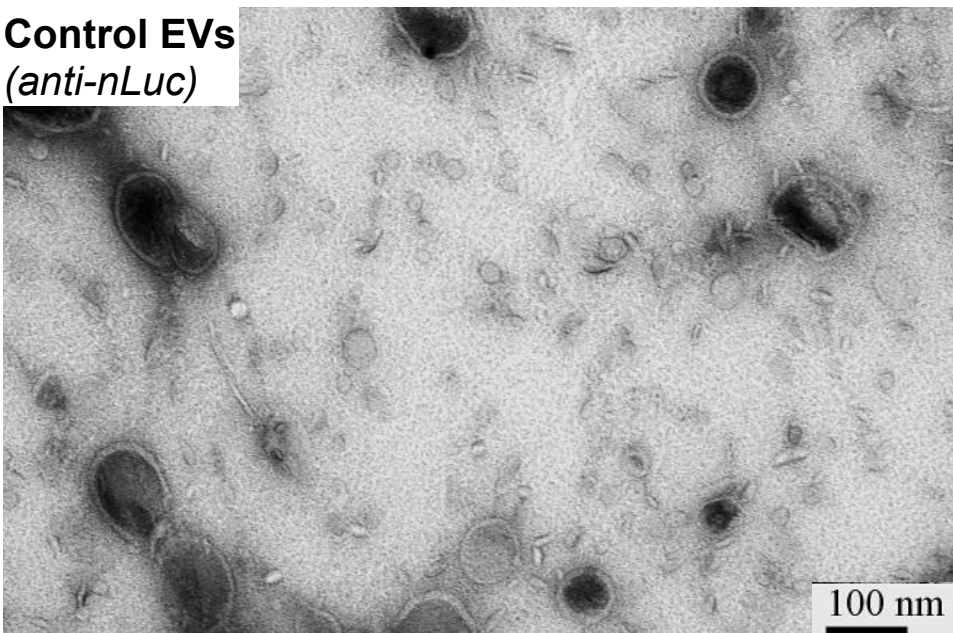


nLuc EVs
(*anti-nLuc*)



Control EVs
(*anti-nLuc*)



Supplemental Figure S4: Widefield TEM images for Figure 3C. The EV fractions (F2-5) were immunogold-labeled following staining with anti-nano-Luciferase antibody. Cyan arrowheads point to gold-conjugated secondary antibody co-localizing with small EVs.